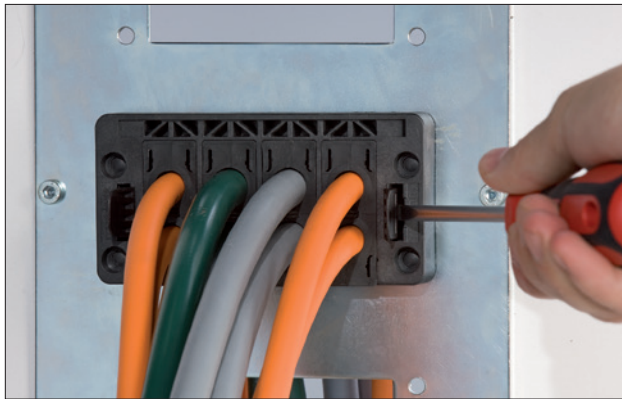


Configurable cable entry systems

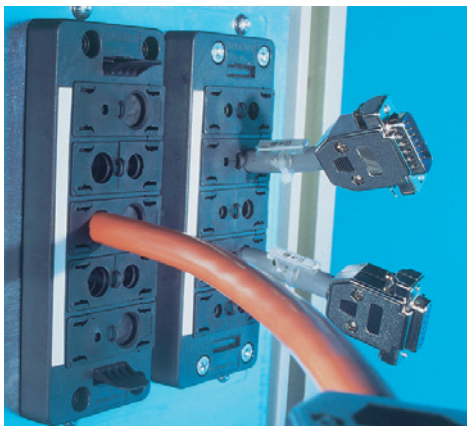


Use

These cable entry systems are made of bases and grommets that can be chosen accordingly to the specific application. The cable entry systems allow quicker mounting also of pre-assembled cables and can be configured according to each specific need choosing the right available grommets. They can be installed without screws using the special catch hooks (included in the package for wall thickness of 1,5+2,0 mm). The grommets are available in two sizes, the "small" ones are suitable for cable with diameter up to 16 mm and the "large" one are suitable for cable with diameter up to 31 mm.

The configurable cable entry system is a split system that solves problems like introducing pre-assembled cables into enclosures. Larger plugs can also be introduced into enclosures without difficulty. The provided catch hooks significantly speed up mounting of the entire plate on the control cabinet. Different grommets allow users to choose the right solution for their application.

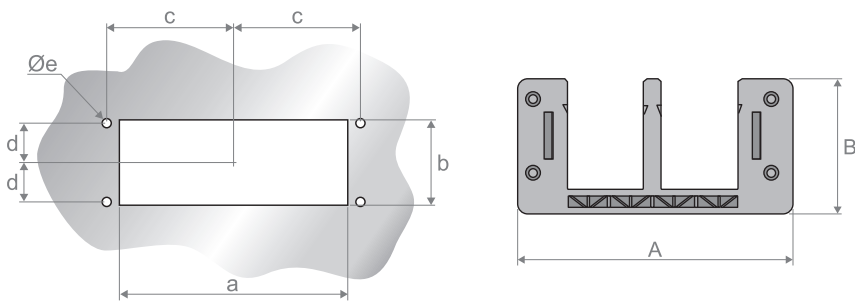
- Cable insertion without interruption.
- Simple mounting.
- Single-piece frame.
- Snap-in from 1.5 to 4.1 mm wall thickness and no need to screw on.
- Strain relief.
- High protection class.



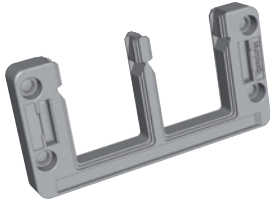
Technical data

Characteristics	Value/property	Remarks
Material	Polyamide 6.6	-
Temperature range	-40°C, +80°C (transient up to 100°C)	-
Flammability rating	V0	UL 94
Protection class	IP 54	-
Color	Black	-

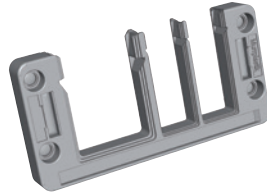
Coding and dimensions



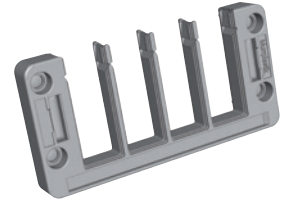
RPCRN16.02



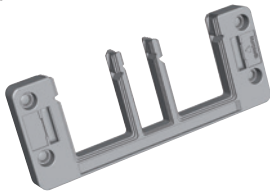
RPCRN16.05



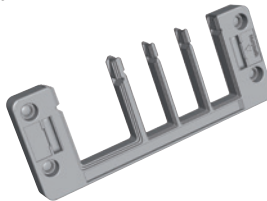
RPCRN16.08



RPCRN24.04



RPCRN24.07



RPCRN24.10

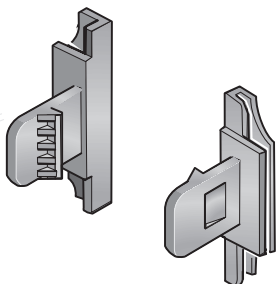


Code of the base ⁽¹⁾	No. of grommets ⁽¹⁾		Thickness [mm]	Sizes [mm]							Packaging [pcs]
	"Small"	"Large"		A	B	a	b	c	d	e	
RPCRN16.02	0	2	15,5	116,0	58,0	86,0	36,0	51,5	16,0	5,5	1
RPCRN16.05	4	1	15,5	116,0	58,0	86,0	36,0	51,5	16,0	5,5	1
RPCRN16.08	8	0	15,5	116,0	58,0	86,0	36,0	51,5	16,0	5,5	1
RPCRN24.04	2	2	15,5	146,0	58,0	112,0	36,0	65,0	16,0	5,5	1
RPCRN24.07	6	1	15,5	146,0	58,0	112,0	36,0	65,0	16,0	5,5	1
RPCRN24.10	10	0	15,5	146,0	58,0	112,0	36,0	65,0	16,0	5,5	1

(1) The grommets and their codes can be selected hereinafter in the chapter "Grommets for cable entry systems".

Note. The catch hooks for 1,5÷2,0 mm wall thickness are supplied with the base, catch hooks' codes for different wall thicknesses are in the table below.

Catch hooks

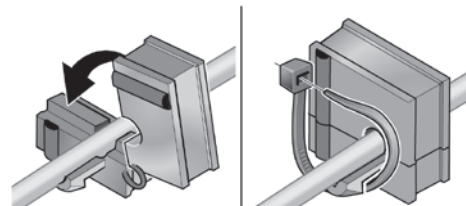


Code of the catch hooks	Plate thickness [mm]	Packaging [pcs]
RPHKS010	1,5÷2,0	10
RPHKS020	2,1÷2,7	10
RPHKS030	2,8÷3,4	10
RPHKS040	3,5÷4,1	10

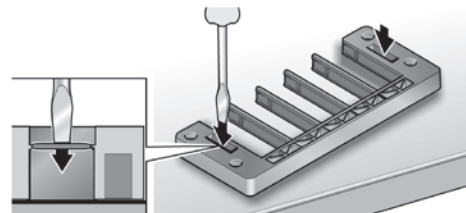
Mounting

Snap-on mounting

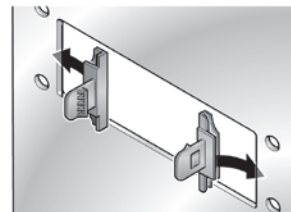
1. Lay the cable into the appropriate grommet.



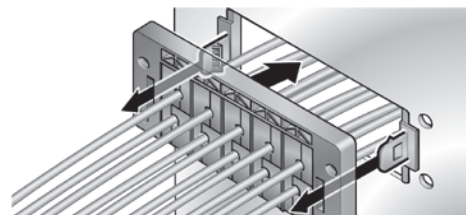
2. Punch through cover on base frame.



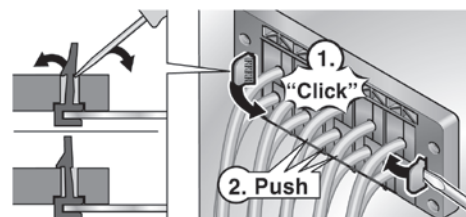
3. Create a cut-out as shown in the drawings (see "Codes and dimensions"). Set the catch hooks into the sides of the cut-out.



4. Install all grommets and insert the base onto the catch hooks and press on.

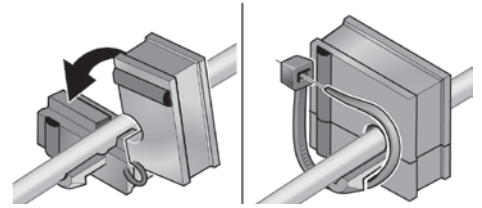


5. Lock the catch hooks with the base and press gently on the grommets.

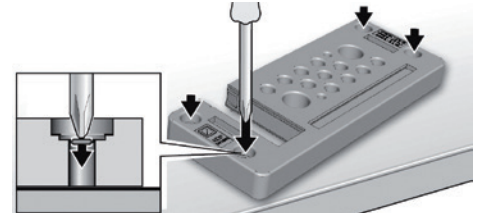


Screw-on mounting

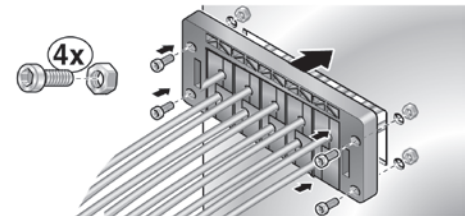
1. Lay the cable into the appropriate grommet.



2. Punch through cover on base frame.



3. Create a cut as shown in the drawings (see "Codes and dimensions"). Install all grommets and fix the base with 4 screws.



4. Press gently on the grommets.

