

Metallic cable glands

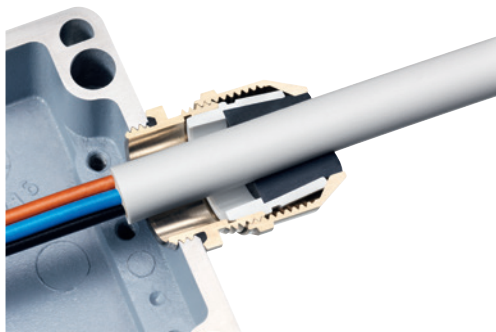


Use

Our metallic cable glands are produced with a particular geometry that assures an equal cable compression having a large clamping and sealing areas designed for a secure and flexible everyday use. These cable glands, supplied with the o-ring on thread side, are produced with a short or long thread for secure fastening with thread or counter nut. The elastic sealing rings have a good chemical resistance and they provide a reliable seal with a guaranteed IP 68 protection class. The large hexagonal element of the screw-down nuts ensures consistently reliable and secure hold when turning by hand and tightening with the tool.

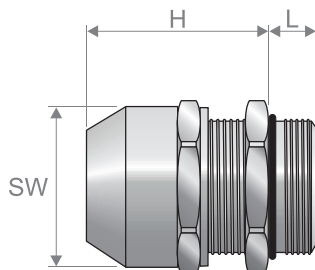
Technical data

Characteristics	Value/property
Material	Nickel-plated brass
Sealing ring material	TPE, one-piece.
O-ring material	NBR
Temperature range	-40°C, +100°C
Protection class	IP 68



Coding and dimensions

Straight cable gland

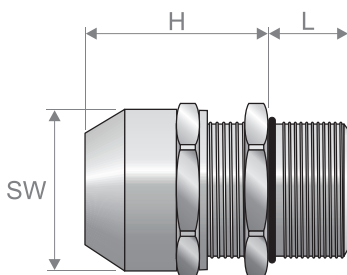


Code	Thread	Tightening key SW [mm]	cable diameter Min/Max [mm]	Sizes [mm]		Packaging [pcs]	Note
				H	L		
PCM100_M012X010	M12x1,5	15	1,0÷5,0	17,0	5,0	50	(1)
PCM100_M012X020	M12x1,5	15	3,0÷7,0	17,0	5,0	50	(1)
PCM100_M016X010	M16x1,5	18	2,0÷6,0	20,0	5,0	50	(1)
PCM100_M016X020	M16x1,5	18	4,5÷10,0	20,0	5,0	50	(1)
PCM100_M020X010	M20x1,5	22	3,5÷8,0	25,0	6,0	50	(1)
PCM100_M020X020	M20x1,5	22	7,0÷13,0	25,0	6,0	50	(1)
PCM100_M025X010	M25x1,5	28	5,0÷11,0	31,0	7,0	25	(1)

Code	Thread	Tightening key SW [mm]	cable diameter Min/Max [mm]	Sizes [mm]		Packaging [pcs]	Note
				H	L		
PCM100_M025X020	M25x1,5	28	10,0÷17,0	31,0	7,0	25	(1)
PCM100_M032X010	M32x1,5	36	7,0÷15,0	33,0	8,0	25	(1)
PCM100_M032X020	M32x1,5	36	13,0÷21,0	33,0	8,0	25	(1)
PCM100_M040X010	M40x1,5	46	15,0÷23,0	40,0	8,0	10	(1)
PCM100_M040X020	M40x1,5	46	19,0÷28,0	40,0	8,0	10	(1)
PCM100_M050X010	M50x1,5	55	20,0÷29,0	40,0	9,0	5	(1)
PCM100_M050X020	M50x1,5	55	25,0÷35,0	40,0	9,0	5	(1)
PCM100_M063X010	M63x1,5	70	28,0÷39,0	43,0	10,0	5	(1)
PCM100_M063X020	M63x1,5	70	35,0÷48,0	43,0	10,0	5	(1)

(1) c(UR)us certified

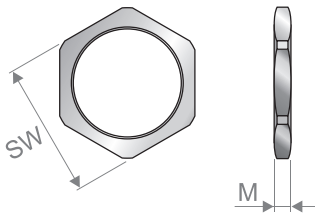
Long straight cable gland



Code	Thread	Tightening key SW [mm]	cable diameter Min/Max [mm]	Sizes [mm]		Packaging [pcs]	Note
				H	L		
PCM101_M012X010	M12x1,5	15	1,0÷5,0	17,0	12,0	50	(1)
PCM101_M012X020	M12x1,5	15	3,0÷7,0	17,0	12,0	50	(1)
PCM101_M016X010	M16x1,5	18	2,0÷6,0	20,0	12,0	50	(1)
PCM101_M016X020	M16x1,5	18	4,5÷10,0	20,0	12,0	50	(1)
PCM101_M020X010	M20x1,5	22	3,5÷8,0	25,0	12,0	50	(1)
PCM101_M020X020	M20x1,5	22	7,0÷13,0	25,0	12,0	50	(1)
PCM101_M025X010	M25x1,5	28	5,0÷11,0	31,0	12,0	25	(1)
PCM101_M025X020	M25x1,5	28	10,0÷17,0	31,0	12,0	25	(1)
PCM101_M032X010	M32x1,5	36	7,0÷15,0	33,0	15,0	25	(1)
PCM101_M032X020	M32x1,5	36	13,0÷21,0	33,0	15,0	25	(1)
PCM101_M040X010	M40x1,5	46	15,0÷23,0	40,0	15,0	10	(1)
PCM101_M040X020	M40x1,5	46	19,0÷28,0	40,0	15,0	10	(1)
PCM101_M050X010	M50x1,5	55	20,0÷29,0	40,0	15,0	5	(1)
PCM101_M050X020	M50x1,5	55	25,0÷35,0	40,0	15,0	5	(1)
PCM101_M063X010	M63x1,5	70	28,0÷39,0	43,0	15,0	5	(1)
PCM101_M063X020	M63x1,5	70	35,0÷48,0	43,0	15,0	5	(1)
PCM101_M063X030	M63x1,5	80	44,0÷55,0	43,0	15,0	5	(1)

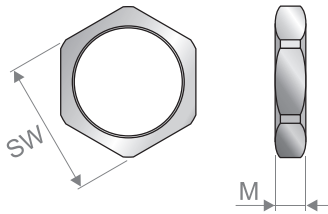
(1) c(UR)us certified

Thin lock nut



Code	Thread	Tightening key SW [mm]	Sizes M [mm]	Packaging [pcs]
PCFM10_M012	M12x1,5	15	3,0	100
PCFM10_M016	M16x1,5	19	3,0	100
PCFM10_M020	M20x1,5	24	3,5	100
PCFM10_M025	M25x1,5	30	4,0	50
PCFM10_M032	M32x1,5	36	4,0	25
PCFM10_M040	M40x1,5	46	5,0	25
PCFM10_M050	M50x1,5	55	5,5	10
PCFM10_M063	M63x1,5	70	6,0	10
PCFM10_M075	M75x1,5	80	6,0	10
PCFM10_M080	M80x2,0	95	8,0	5
PCFM10_M085	M85x2,0	95	8,0	5
PCFM10_M095	M95x2,0	110	9,0	5
PCFM10_M100	M100x3,0	115	9,0	1
PCFM10_M105	M105x3,0	120	9,0	1
PCFM10_M115	M115x3,0	125	10,0	1

Thick lock nut



Code	Thread	Tightening key SW [mm]	Sizes M [mm]	Packaging [pcs]
PCFM12_M012	M12x1,5	15	5,0	50
PCFM12_M016	M16x1,5	19	5,0	50
PCFM12_M020	M20x1,5	24	5,5	50
PCFM12_M025	M25x1,5	30	5,5	50
PCFM12_M032	M32x1,5	36	6,0	50
PCFM12_M040	M40x1,5	46	7,0	50

Code composition



Diameter range

Code depending on the cable range.

Family

Code depending on the glands' family.

Version

To be interted

Metric

M

Thread

M12, M16, ..., M63

To be interted

012, 016, ..., 063

Lock nut



Family

Code depending on the lock nuts' family.

Version

To be interted

Metric

M

Thread

M12, M16, ..., M63

To be interted

012, 016, ..., 063