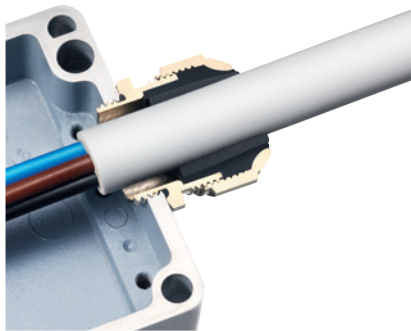


## NEMA metallic cable glands



### Use

Nickel plated brass cable glands made by a double layer seals to allow a wide range of diameters. They are IP 68 protection class and suitable for use in hazardous location according to NFPA 70 (NEC). These cable glands are certified for rail applications according to EN 45545-2.



### Technical data

Characteristics	Value/property
Material	Nicke/-plated brass or AIS/ 316 Stainless Steel
Sealing ring material	EPDM Class V0, two-piece
Temperature range	-45°C, +105°C
Protection class	IP 68, NEMA 4X
Standards of use	EN 45545-2 HL1, HL2, HL3, R22, R23 UL/CSA approvals: NEMA 250, UL 514B, CSA C22.2; NFPA 70 (NEC) Art. 501.10 (B) (2) Class I Div. 2, Art. 502.10 (A) (2) and (B) (2) Class II, Div. 1 and 2, Art. 503.10 (A) (3) Class III Div. 1 and 2

## Coding and dimensions

### Straight cable gland

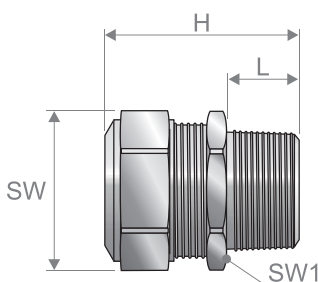


Fig. 1  
Metric version

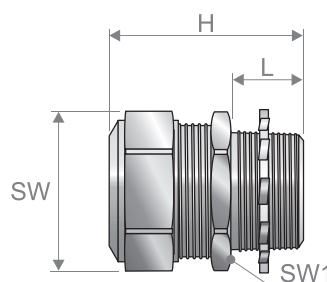


Fig. 2  
NPT version

Code	Version	Thread	Number of pieces of sealing ring	Tightening key		Cable diameter [mm] Min/Med <sup>(3)</sup> /Max	Sizes [mm]		Packaging [pcs]	Note
				SW	SW1		H	L		
AN736.716.1	NPB	M16x1,5	2	17	18	4,0+6,5+8,5	32	10	10	(1)
AN736.717.1	NPB	M20x1,5	2	17	22	4,0+6,5+8,5	32	10	10	(2)
AN736.720.1	NPB	M20x1,5	2	22	22	6,0+9,0+12,0	35	10	10	(2)
AN736.722.1	NPB	M25x1,5	2	22	27	6,0+9,0+12,0	36	10	5	(2)
AN736.725.1	NPB	M25x1,5	2	27	27	10,5+14,0+17,0	38	10	5	(2)
AN736.728.1	NPB	M32x1,5	2	27	35	10,5+14,0+17,0	40	12	5	(2)
AN736.732.1	NPB	M32x1,5	2	35	35	15,5+20,0+24,0	42	12	5	(2)

Code	Version	Thread	Number of pieces of sealing ring	Tightening key		cable diameter [mm] Min/Med <sup>(3)</sup> /Max	Sizes [mm]		Packaging [pcs]	Note
				SW	SW1		H	L		
AN736.735.1	NPB	M40x1,5	2	35	43	15,5÷20,0÷24,0	43	13	2	(2)
AN736.740.1	NPB	M40x1,5	2	43	43	22,0÷27,0÷31,0	45	13	2	(2)
AN736.745.1	NPB	M50x1,5	2	43	55	22,0÷27,0÷31,0	46	14	2	(2)
AN736.750.1	NPB	M50x1,5	2	53	55	29,5÷35,0÷40,0	50	14	2	(2)
AN738.712.2	NPB	NPT 1/2"	2	17	24	4,0÷6,5÷8,5	36	14	10	(2)
AN738.716.2	NPB	NPT 1/2"	2	22	24	6,0÷9,0÷12,0	39	14	10	(2)
AN738.718.2	NPB	NPT 3/4"	2	22	30	6,0÷9,0÷12,0	40	14	5	(2)
AN738.720.2	NPB	NPT 3/4"	2	27	30	10,5÷14,0÷17,0	42	14	5	(2)
AN738.723.2	NPB	NPT 1"	2	27	38	10,5÷14,0÷17,0	44	16	5	(2)
AN738.726.2	NPB	NPT 1"	2	35	38	15,5÷20,0÷24,0	46	16	5	(2)
AN738.730.2	NPB	NPT 1 1/4"	2	35	48	15,5÷20,0÷24,0	46	16	2	(2)
AN738.735.2	NPB	NPT 1 1/4"	2	43	48	22,0÷27,0÷31,0	48	16	2	(2)
AN738.738.2	NPB	NPT 1 1/2"	2	43	55	22,0÷27,0÷31,0	50	18	2	(2)
AN738.740.2	NPB	NPT 1 1/2"	2	53	55	29,5÷35,0÷40,0	64	18	2	(2)
AN736.716.9	SS	M16x1,5	2	17	18	4,0÷6,5÷8,5	32	10	10	(1)
AN736.717.9	SS	M20x1,5	2	17	22	4,0÷6,5÷8,5	32	10	10	(2)
AN736.720.9	SS	M20x1,5	2	22	22	6,0÷9,0÷12,0	35	10	10	(2)
AN736.722.9	SS	M25x1,5	2	22	27	6,0÷9,0÷12,0	36	10	5	(2)
AN736.725.9	SS	M25x1,5	2	27	27	10,5÷14,0÷17,0	38	10	5	(2)
AN736.728.9	SS	M32x1,5	2	27	35	10,5÷14,0÷17,0	40	12	5	(2)
AN736.732.9	SS	M32x1,5	2	35	35	15,5÷20,0÷24,0	42	12	5	(2)
AN736.735.9	SS	M40x1,5	2	35	43	15,5÷20,0÷24,0	43	13	2	(2)
AN736.740.9	SS	M40x1,5	2	43	43	22,0÷27,0÷31,0	45	13	2	(2)
AN736.745.9	SS	M50x1,5	2	43	55	22,0÷27,0÷31,0	46	14	2	(2)
AN736.750.9	SS	M50x1,5	2	53	55	29,5÷35,0÷40,0	50	14	2	(2)
AN738.712.92	SS	NPT 1/2"	2	17	24	4,0÷6,5÷8,5	36	14	10	(2)
AN738.716.92	SS	NPT 1/2"	2	22	24	6,0÷9,0÷12,0	39	14	10	(2)
AN738.718.92	SS	NPT 3/4"	2	22	30	6,0÷9,0÷12,0	40	14	5	(2)
AN738.720.92	SS	NPT 3/4"	2	27	30	10,5÷14,0÷17,0	42	14	5	(2)
AN738.723.92	SS	NPT 1"	2	27	38	10,5÷14,0÷17,0	44	16	5	(2)
AN738.726.92	SS	NPT 1"	2	35	38	15,5÷20,0÷24,0	46	16	5	(2)
AN738.730.92	SS	NPT 1 1/4"	2	35	48	15,5÷20,0÷24,0	46	16	2	(2)
AN738.735.92	SS	NPT 1 1/4"	2	43	48	22,0÷27,0÷31,0	48	16	2	(2)
AN738.738.92	SS	NPT 1 1/2"	2	43	55	22,0÷27,0÷31,0	50	18	2	(2)
AN738.740.92	SS	NPT 1 1/2"	2	53	55	29,5÷35,0÷40,0	64	18	2	(2)

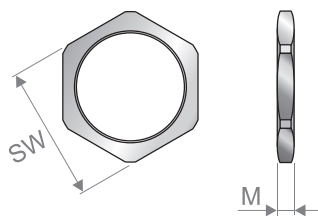
(1) (UL) Recognized and CSA certified.

Materials' description: SS = Stainless steel, NPB = Nickel-plated brass

(2) (UL) Listed and CSA certified.

(3) Intermediate value of passage to a single sealing ring.

### Thin lock nut



Code	Thread	Tightening key [mm]	Sizes	Packaging [pcs]
		SW	M [mm]	
PCFM10_M016	M16x1,5	19	3,0	100
PCFM10_M020	M20x1,5	24	3,5	100
PCFM10_M025	M25x1,5	30	4,0	50
PCFM10_M032	M32x1,5	36	4,0	25
PCFM10_M040	M40x1,5	46	5,0	25
PCFM10_M050	M50x1,5	55	5,5	10